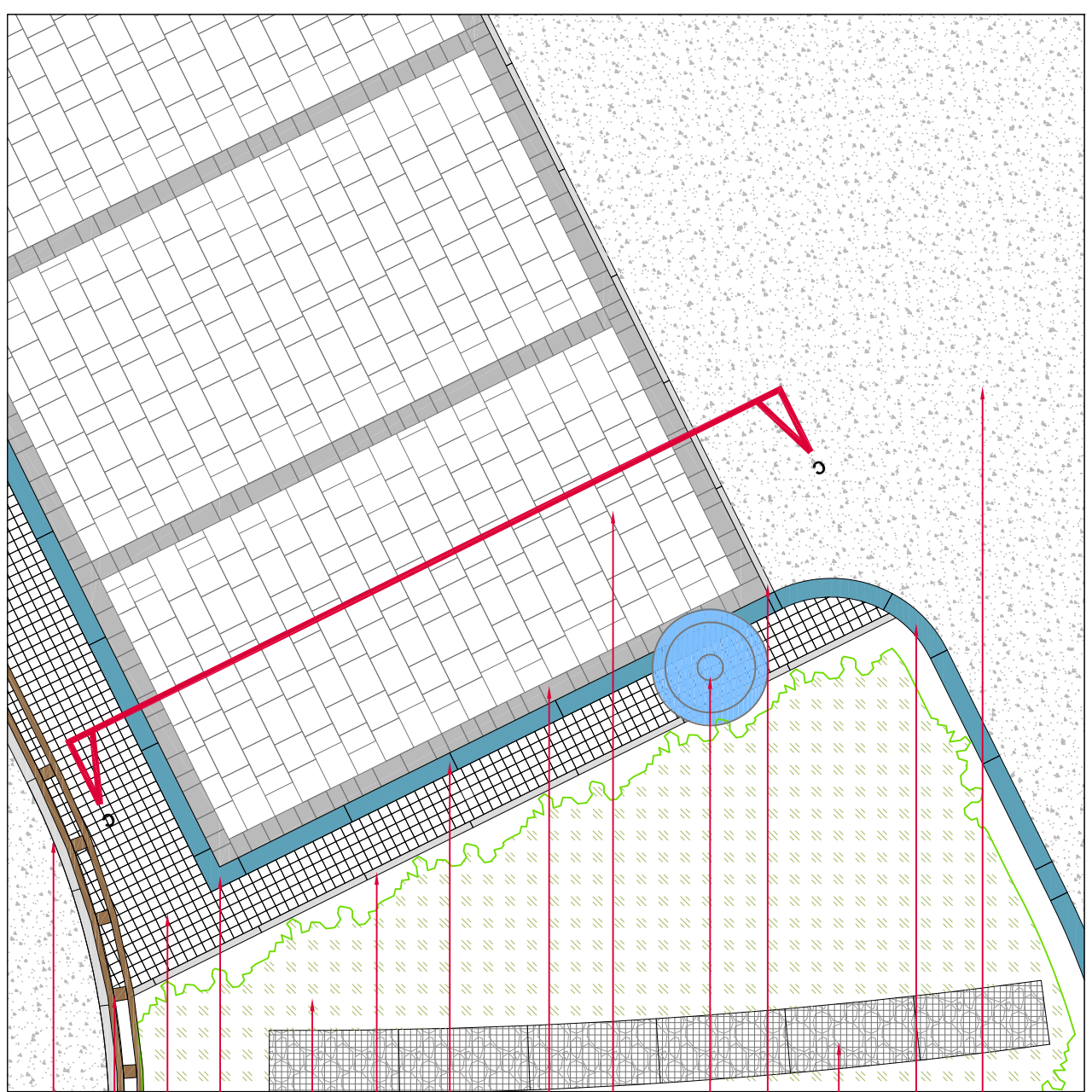


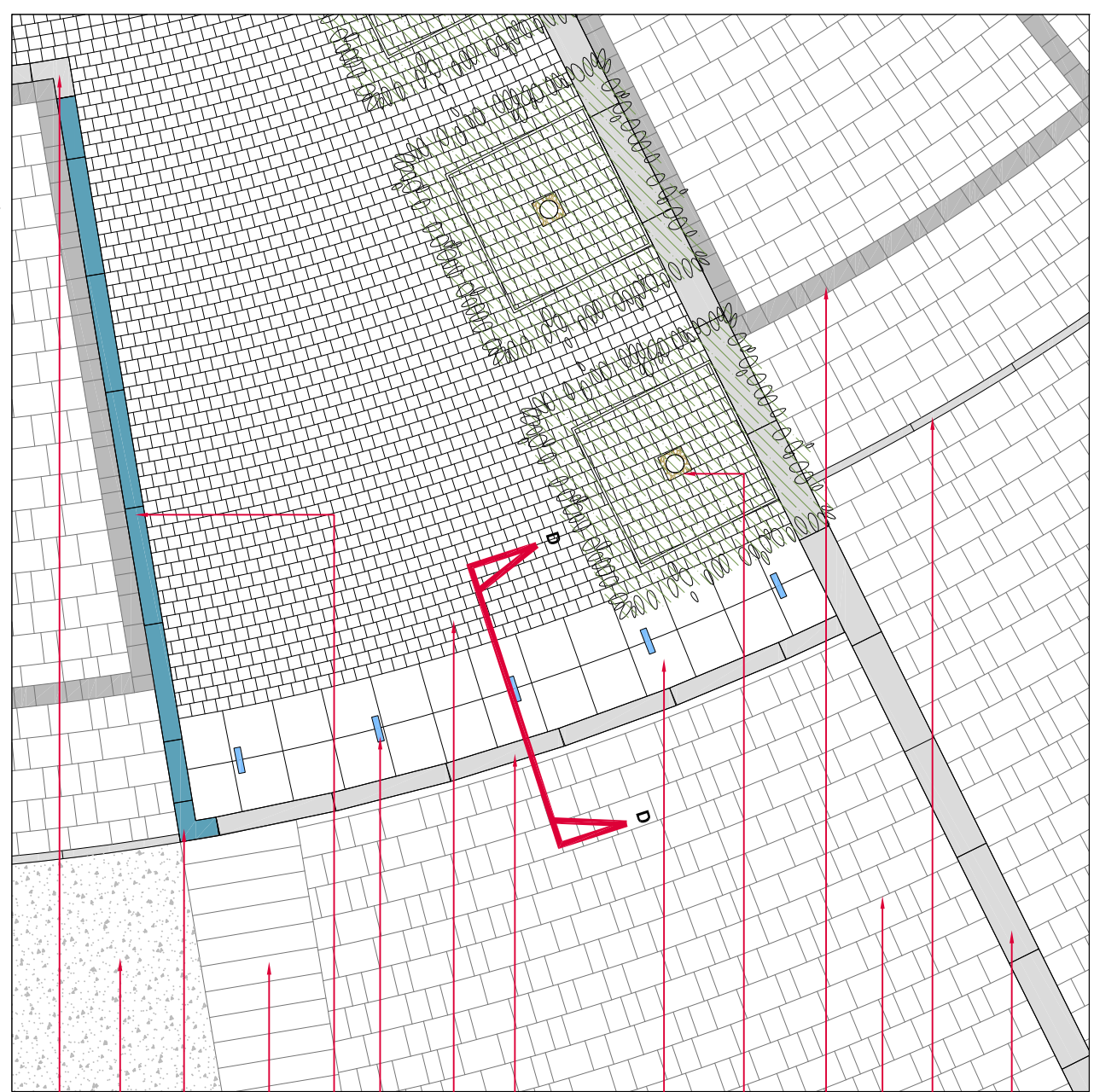
- Light Column (for information refer to drawing 891_109)
- Marshall's Tequila Cobble Paving, size - 800x800mm, colour - Permanent Grey
- Marshall's Conservation Pin Kerb 63 x 150mm - Silver Grey - laid flush
- Mixed ornamental low level
- Marshall's Conservation Pin Kerb 63 x 150mm - Silver Grey - laid flush
- Paving by ending, Marshall Block Paving 180mm gauge (240/160/120mm) - Silver Grey - finished to match Conservation Kerbs
- Marshall's Conservation Textured Concrete Flag Paving, 900x900x50mm - Charcoal Laying Pattern - Stretcher Bond
- Marshall's Tequila Block Paving 240 x (320/240/120mm) - Permanent Grey
- Marshall's Conservation Kerb 255 x 200mm - Silver Grey - 150mm upstand - straight section
- Marshall's Conservation Kerb 255 x 200mm - Silver Grey - 150mm upstand - straight section - mitre joint
- Marshall's Southmore Natural Sandstone Silt Paving, 100 x 100 x 100mm, finish - diamond sawn
- Marshall's Conservation Kerb 255 x 200mm - Silver Grey - laid flush - straight section
- Bollard (for information refer to drawing 891_109)

DETAILED AREA 1 - Plan View
1:50 @ A1



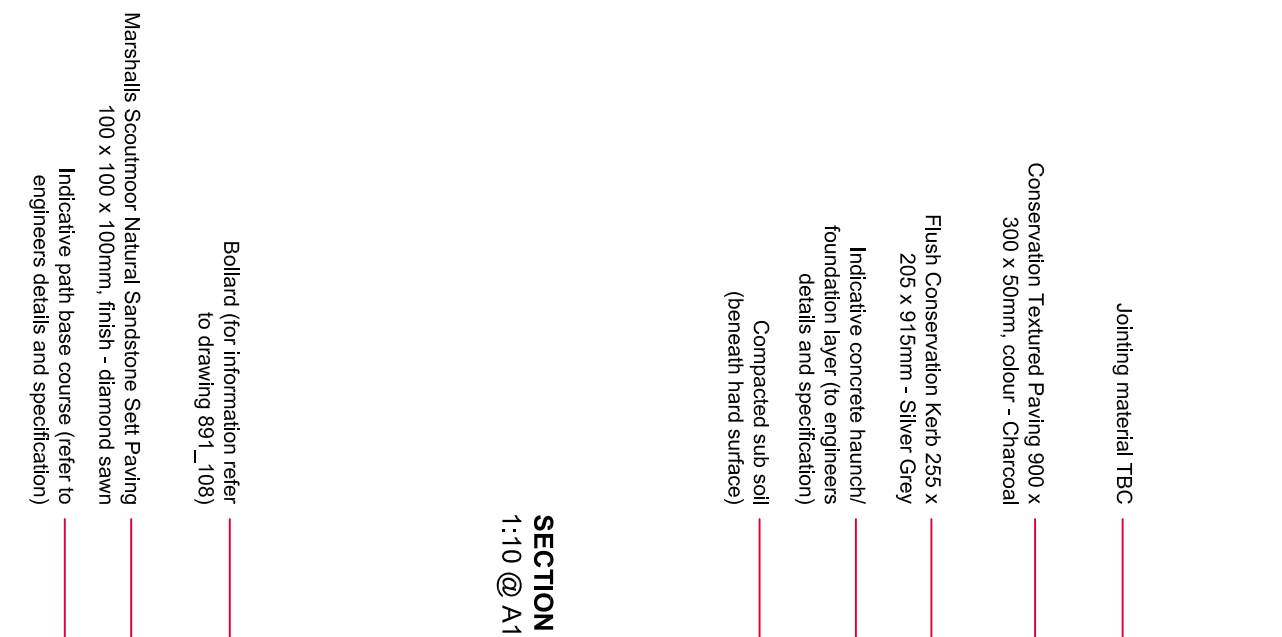
- Birnie Road Surfacing - sub base to engineer's specification
- Marshall's Conservation Kerb 14 x 255 - Silver Grey - 150mm upstand - 2m radius section
- Feature gabion wall, for details refer to drawing 891_121
- Marshall's Conservation Pin Kerb 63 x 150mm - Silver Grey - laid flush
- Light Column (for information refer to drawing 891_109)
- Marshall's Tequila Block Paving 240 x (320/240/120mm) - Permanent Grey
- Paving by ending, Marshall Block Paving 180mm gauge (240/160/120mm) - Silver Grey - finished to match Conservation Kerbs
- Marshall's Conservation Kerb 14 x 255 - Silver Grey - 150mm upstand - straight section
- Marshall's Conservation Pin Kerb 63 x 150mm - Silver Grey - laid flush
- Mixed ornamental low level
- shrub/herbaceous planting (refer to drawing 891_116 for details)
- Marshall's Conservation Kerb Internal Angle 305 x 145 x 255mm
- Marshall's Tequila Cobble Paving, size - 800x800mm, colour - Permanent Grey
- Proposed timber boundary fence (detail to be agreed)
- Standard pre cast concrete half balustrade road kerb

DETAILED AREA 2 - Plan View
1:50 @ A1



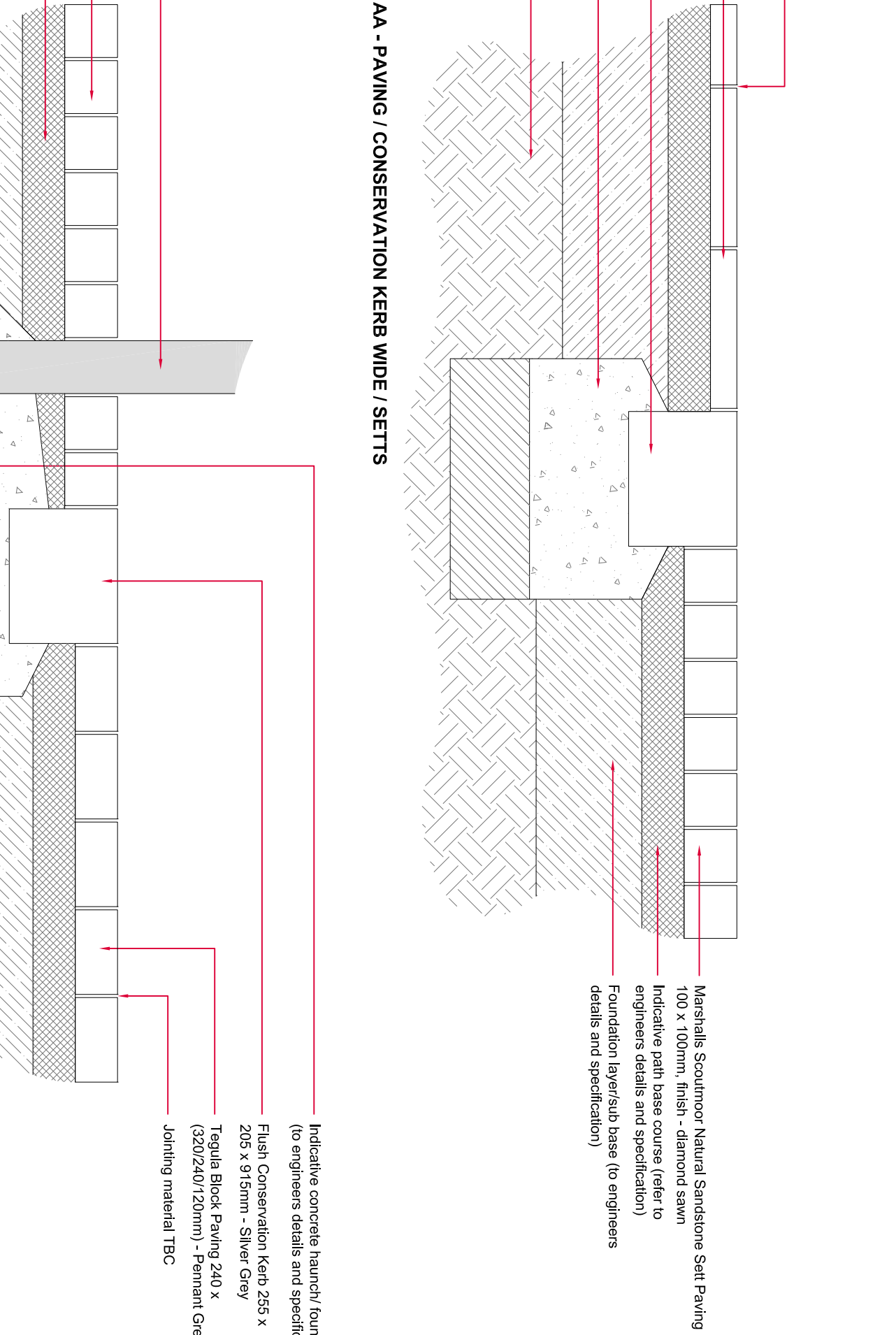
- Marshall's Conservation Kerb 255 x 200mm - Silver Grey - laid flush - straight section
- Marshall's Conservation Pin Kerb 63 x 150mm - Silver Grey - laid flush
- Marshall's Tequila Block Paving 240 x (320/240/120mm) - Permanent Grey
- Paving by ending, Marshall Block Paving 180mm gauge (240/160/120mm) - Silver Grey - finished to match Conservation Kerbs
- Marshall's Conservation Kerb Internal Angle 305 x 145 x 255mm
- Marshall's Natural Stone Tequila Bisher Paving, recommendation, material - Marshall's Southmore Sandstone to match entrance area silt paving
- Marshall's Conservation Kerb 14 x 255 - Silver Grey - laid flush - straight section
- Marshall's Southmore Natural Sandstone Silt Paving, 100 x 100 x 100mm, finish - diamond sawn
- Marshall's Conservation Kerb 14 x 255 - Silver Grey - 150mm upstand - straight section
- Marshall's Conservation Kerb 14 x 255 - Silver Grey - 150mm upstand - straight section
- Marshall's Single S Flange Level
- Natural finish - Pimple size - 914 x 200
- Marshall's Conservation Kerb External Angle 305 x 145 x 255mm
- Birnie Road Surfacing - sub base to engineer's specification
- Marshall's Conservation Kerb Internal Angle 305 x 145 x 255mm

DETAILED AREA 3 - Plan View
1:50 @ A1



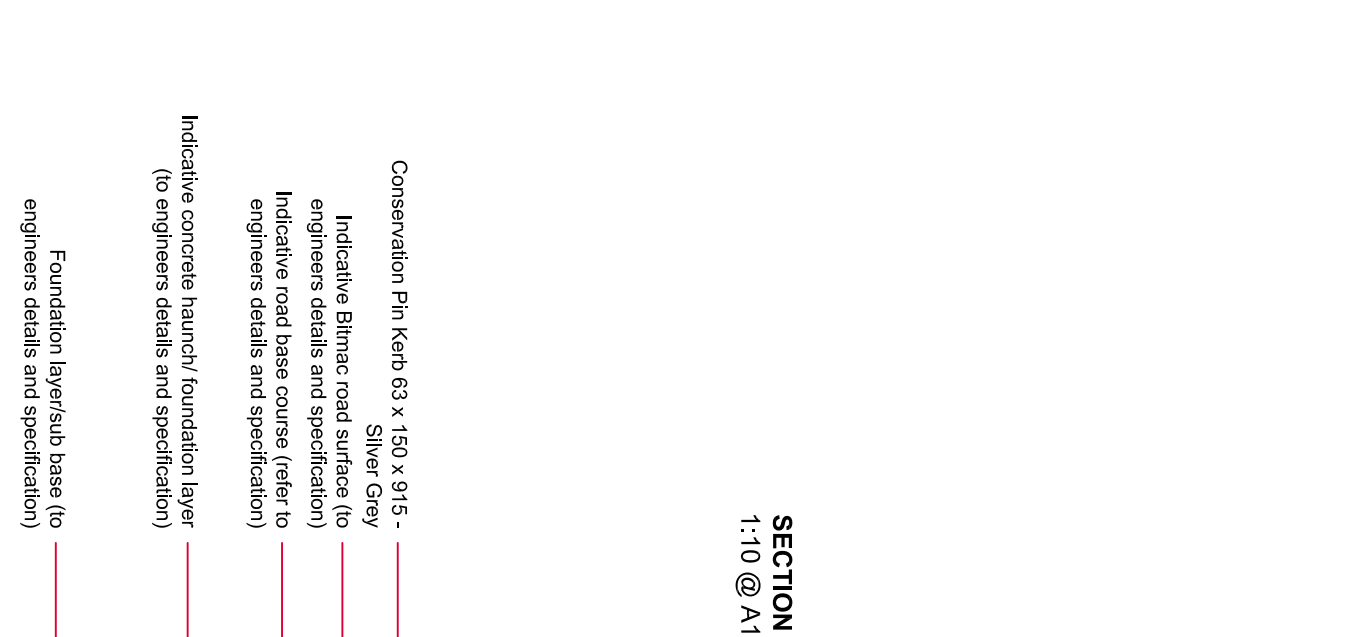
- Jointing material TBC
- Conservation Textured Paving 900 x 300 x 50mm, colour - Charcoal
- Flush Conservation Kerb 255 x 205 x 915mm - Silver Grey
- Indicative concrete haunch/ foundation layer (to engineers details and specification)
- Compacted sub soil (beneath hard surface)

SECTION AA - PAVING / CONSERVATION KERB WIDE / SETTS
1:10 @ A1



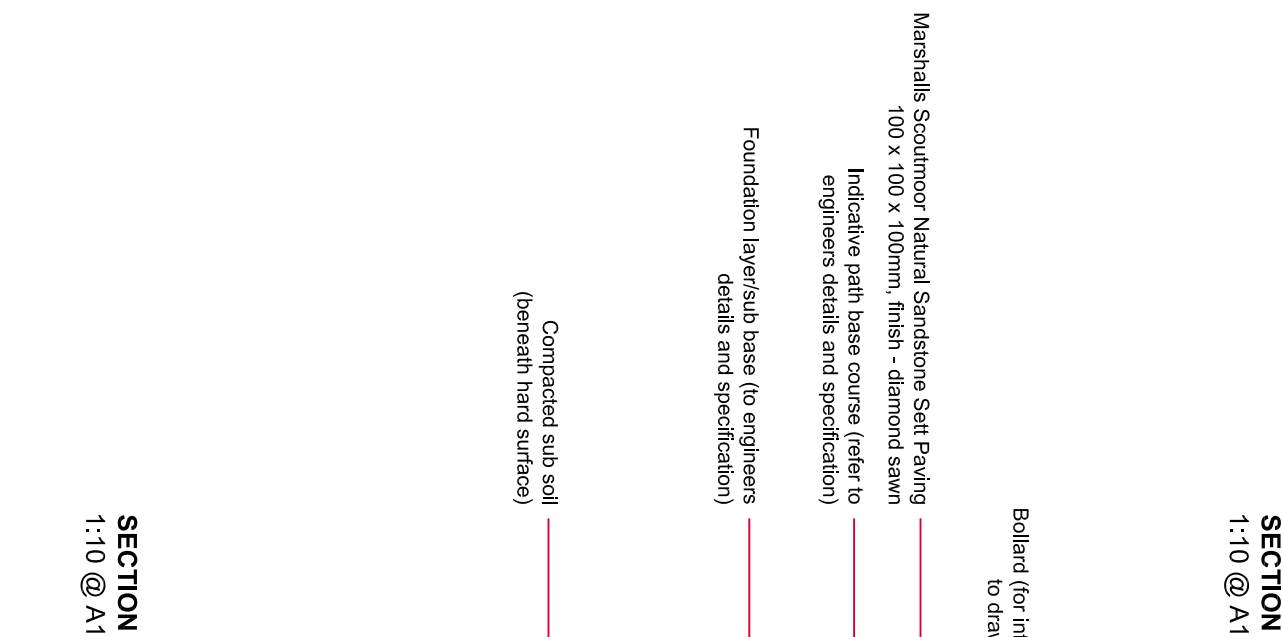
- Bollard (for information refer to drawing 891_109)
- Marshall's Southmore Natural Sandstone Silt Paving, 100 x 100 x 100mm, finish - diamond sawn
- Indicative path base course (refer to engineers details and specification)
- Foundation (typical base to engineers details and specification)

SECTION BB - SETTS / BOLLARD / CONSERVATION KERB WIDE / PARKING
1:10 @ A1



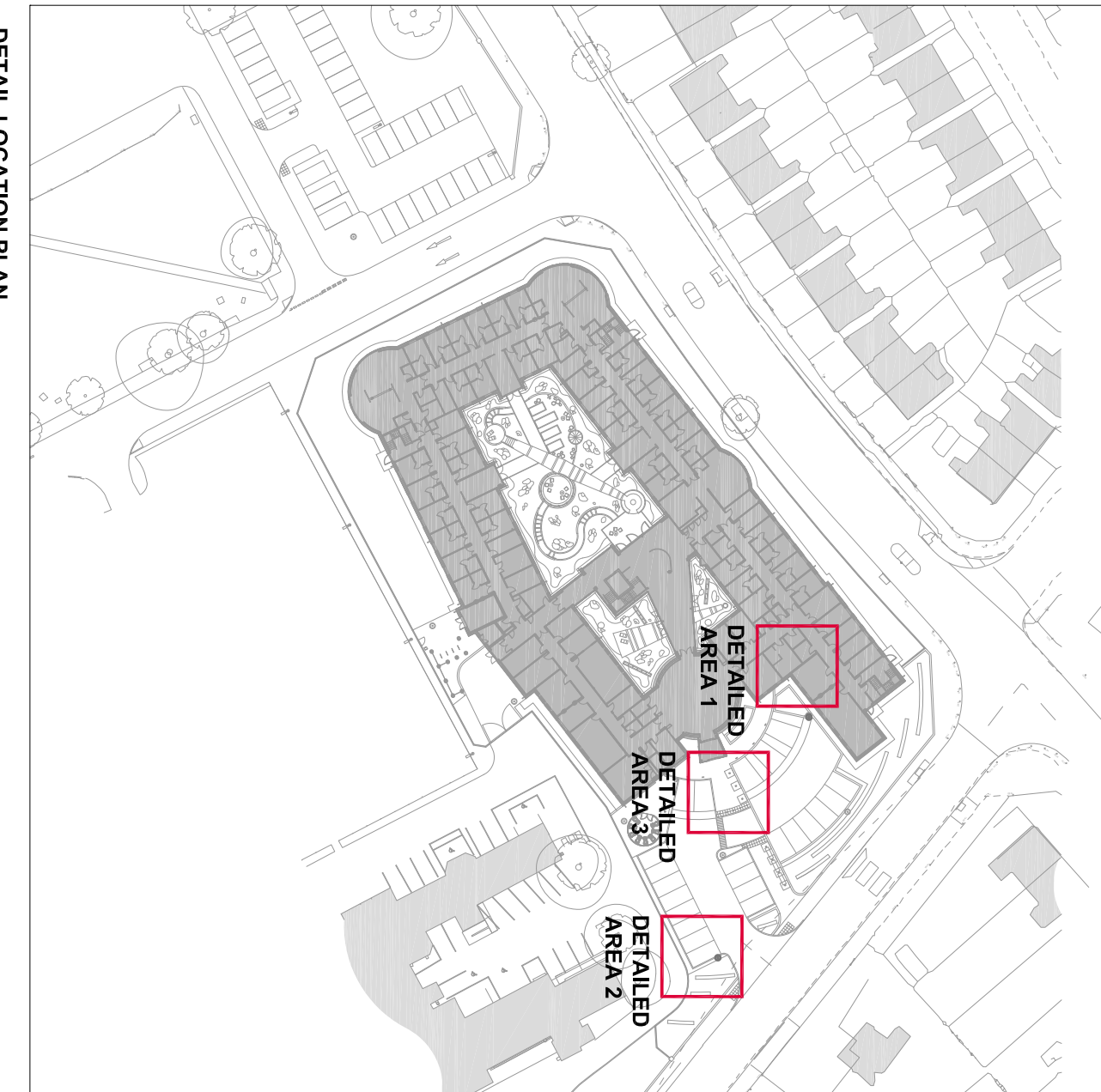
- Conservation Pin Kerb 63 x 150 x 915 - Silver Grey
- Indicative Bitmac road surface (to engineers details and specification)
- Indicative road base course (refer to engineers details and specification)
- Indicative concrete haunch/ foundation layer (to engineers details and specification)
- Foundation (typical base to engineers details and specification)

SECTION CC - BITMAC / PIN KERB / BLOCK PAVING / CONSERVATION KERB / PLANTING
1:10 @ A1



- Marshall's Southmore Natural Sandstone Silt Paving, 100 x 100 x 100mm, finish - diamond sawn
- Indicative path base course (refer to engineers details and specification)
- Foundation (typical base to engineers details and specification)
- Compacted sub soil (beneath hard surface)

SECTION DD - SETTS / TACTILE PAVING / BOLLARD / CONSERVATION KERB / PARKING
1:10 @ A1



DETAIL LOCATION PLAN
NTS @ A1

SAFETY, HEALTH & ENVIRONMENTAL INFORMATION

It is assumed that all works will be carried out by a competent contractor, working where appropriate, to an approved method statement. This is not an exhaustive list and references should be made to the Health and Safety Plan.

1. No abnormal risk
2. No abnormal risk
3. No abnormal risk
4. Decommissioning / Demolition
5. No abnormal risk

Rev.	Pro.	Description	Yes	LH	RS	06.07.15
B		Minor amendments to account for revised building ground floor layout and BREEM requirements	yes	LH	RS	26.05.15
A		Revised in accordance with approved VE Initial Issues for comment	yes	LH	RS	17.12.14